



2022 Bond Issue Forecasting for the Future



Improve Safety
& Security



Serve a Growing
Student Population



Provide Opportunities
for Every Learner

It's In Your Hands...Vote November 8, 2022

District Enrollment

	Elem #4				Elem #5 MS #2					
	Fall**	Fall**	Fall**	Fall**	8/8/2022					
	2018-19	2019-20	2020-21	2021-22	2022-23	2023-24	2024-25	2025-26	2026-27	2027-28
Elementary Enrollment	1,535	1,713	1,865	1,999	2,105	2,174	2,297	2,388	2,453	2,549
Elementary Capacity	104%	89%	97%	99%	84%	87%	92%	95%	98%	102%
Middle School Enrollment	673	736	758	849	928	1,060	1,122	1,218	1,303	1,425
Middle School Capacity	90%	98%	101%	113%	62%	71%	75%	81%	87%	95%
High School Enrollment	666	759	880	957	1,025	1,092	1,178	1,307	1,484	1,597
High School Capacity	89%	101%	77%	83%	89%	95%	102%	114%	129%	139%

% Increase	10.50%	11.62%	9.20%	8.62%	6.65%	6.61%	6.26%	6.87%	6.67%	6.31%
District Total	2,874	3,208	3,503	3,805	4,058	4,326	4,597	4,913	5,241	5,571
**Actual		334	295	302	253	268	271	316	328	331

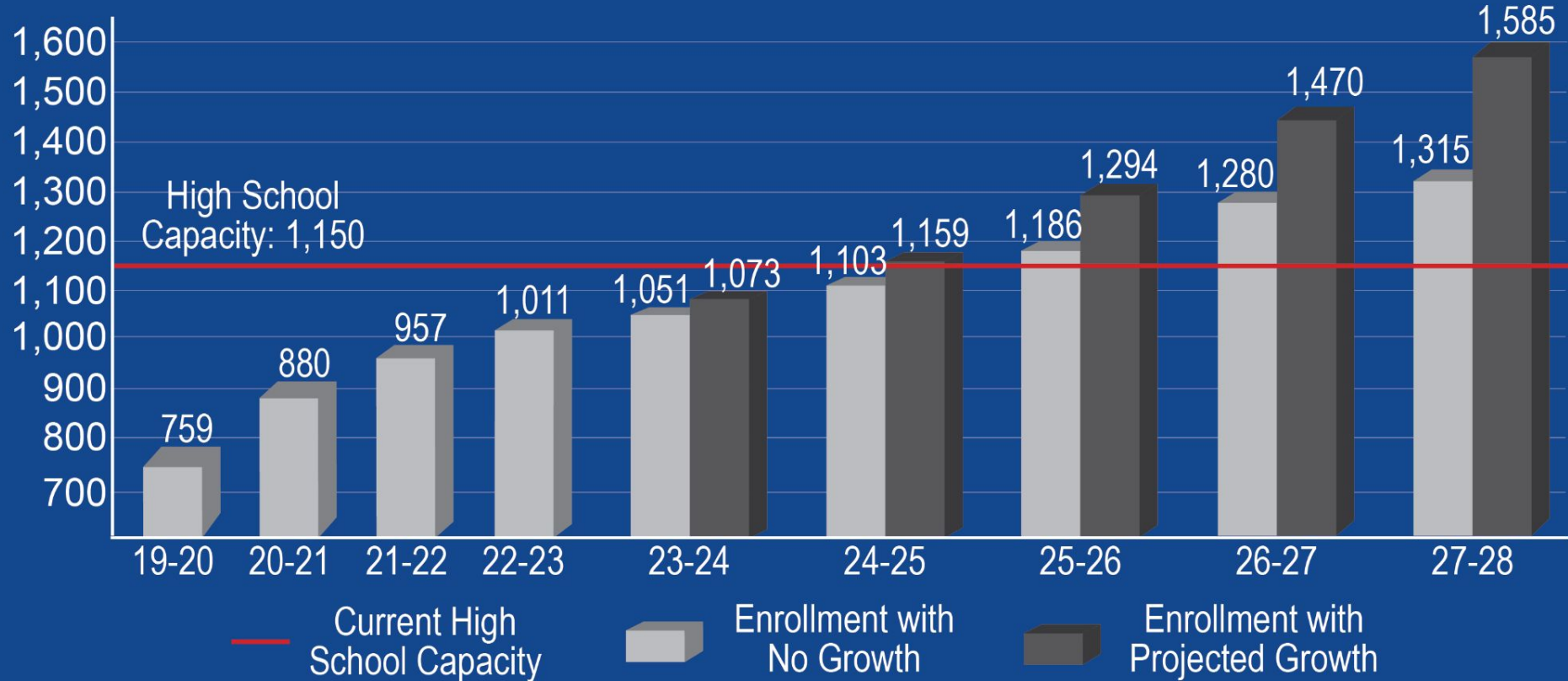
Capacity:
 Elem - AP=483, BE=483, HE=483, PC=575, ST=483
 MS = 750 / 1,500
 HS = 1,150



Projected High School Enrollment by Grade



High School Enrollment Continues to Increase



District Enrollment at Full Build-Out

When the District is at Full Build-Out:

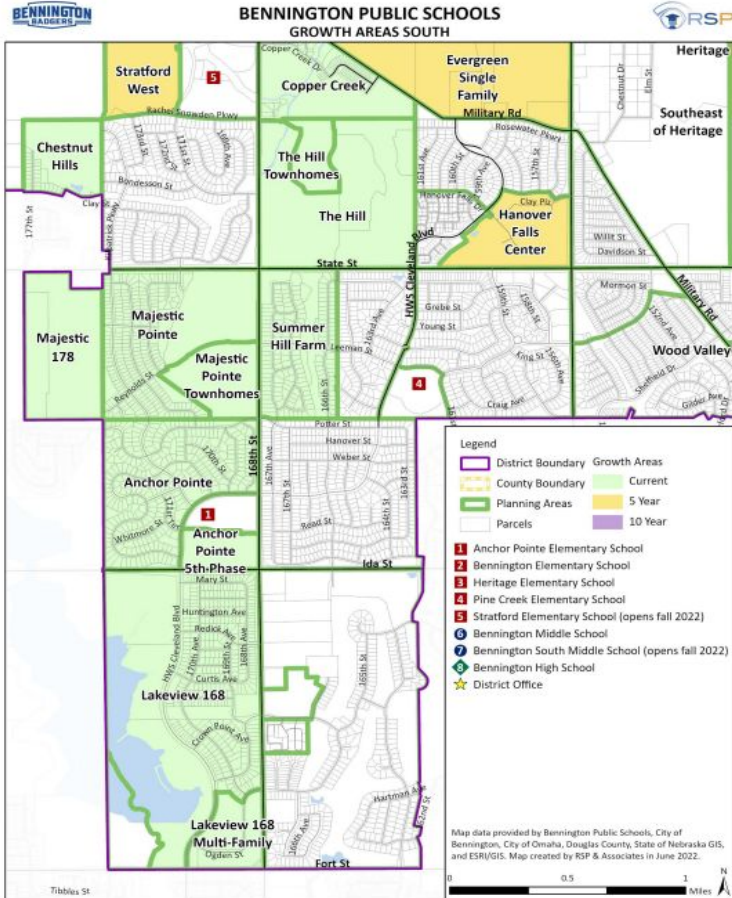
- 12,000 - 14,000 students K-12
 - 4,000 students 9-12

Facilities the District estimates needed at Full Build-Out:

- 3 High Schools
- 4 Middle Schools
- 13 Elementary Schools

Building Capacity	
High School	1 at 1,150 2 at 1,500
Middle School	750
Elementary School	483 (PC - 575)

New Homes Bring New Students

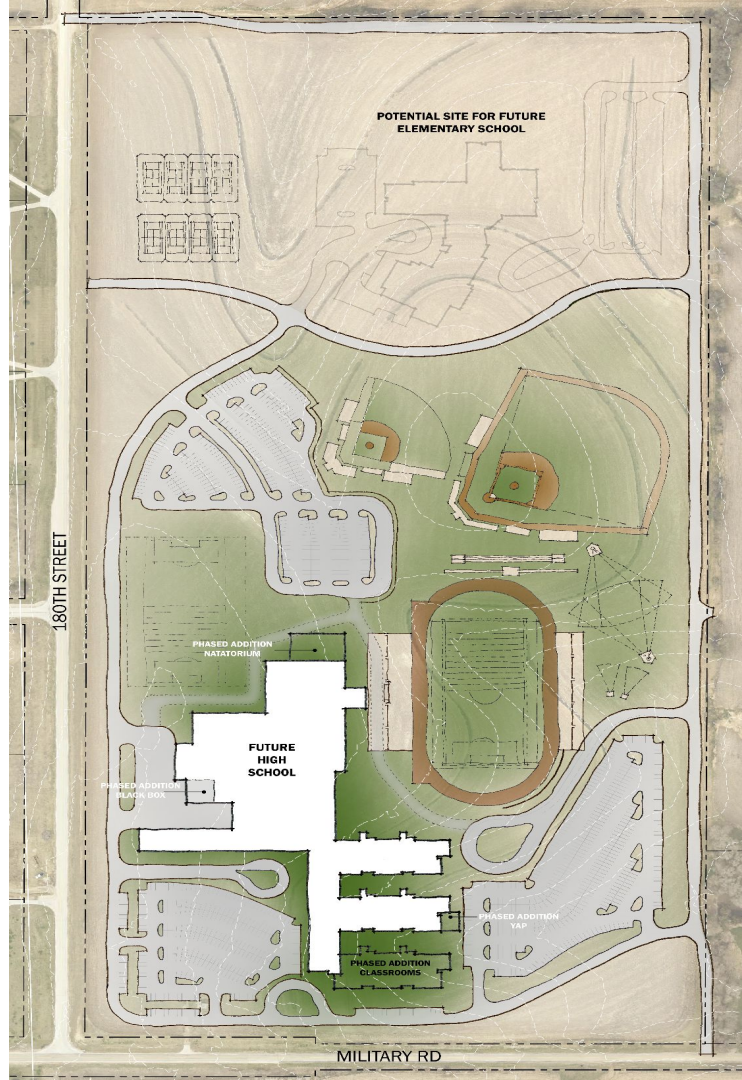


Growth of Housing

December	New Homes	Under Construction
2019	335	200
2020	378	300
2021	421	302

Number of Students

Subdivision	Number of Homes	Number of Students	Number Students/House
Pine Creek	502	531	1.06
Meadow Ridge	327	314	0.96
Newport Landing	212	115	0.54



Future High School Site Layout

Journey for Planning the 2nd High

- **November 2020:** Board of Education Workshop
 - Presentation to current & future board members on future growth
- **November 2021:** Board of Education Workshop
 - Presentation on future growth with a more detailed timeline
- **January 2022**
 - Teacher Interviews & Student Shadowing at Bennington High School
 - Tour Buena Vista & Elkhorn North - Omaha Metro Area
 - Tour Missouri Innovation Campus - Lee's Summit, MO
- **February 2022**
 - Tour Thomas Jefferson & Career and Technical Education Academy - Sioux Falls, SD
 - Committee Workshop - space design identified
 - Committee Workshop - programming elements prioritized
- **April 2022**
 - Defined Program Review
- **June 2022**
 - Pre-Design Workshop
 - Pre-Design Share



- 40 Core instructional classrooms located in the learning suites on the 1st and 2nd level
- Auditorium with a capacity of 800
- Auditorium support space for dressing rooms, set design, etc.
- Performing Arts space for both vocal and instrumental music
- Competition and Auxiliary Gym located on the lower level of the school
- Support space for the gyms including locker rooms, offices, and storage space
- Specialized Learning Lab
- Classrooms for Family & Consumer Science
- Visual Arts classrooms
- Media Center
- Commons area
- Student Support
- Facility Support
- School Offices



What is Included in the High School

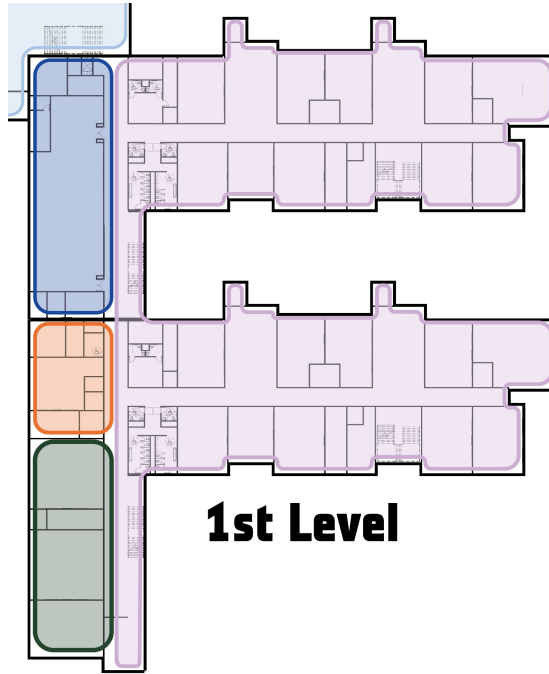
High School Features

Classrooms for:

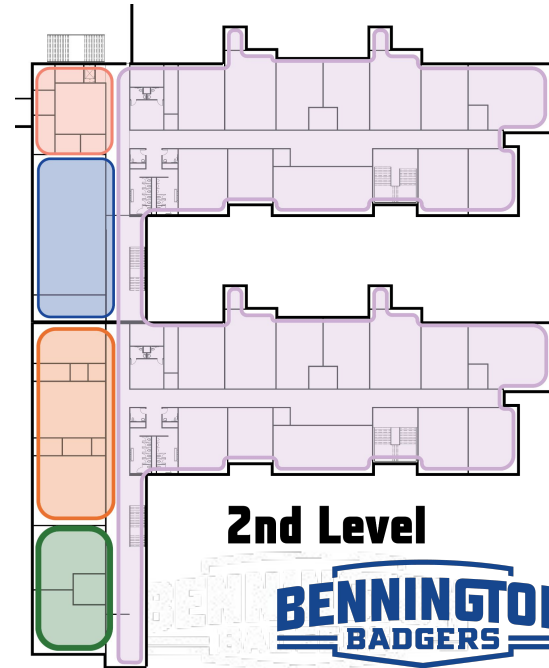
- 40 Core Instructional Classes
- FCS
- Visual Arts

Other Spaces include:

- Media Center
- Student Support
- Specialized Learning Lab



1st Level



2nd Level

High School Features

Fine Arts facilities will include:

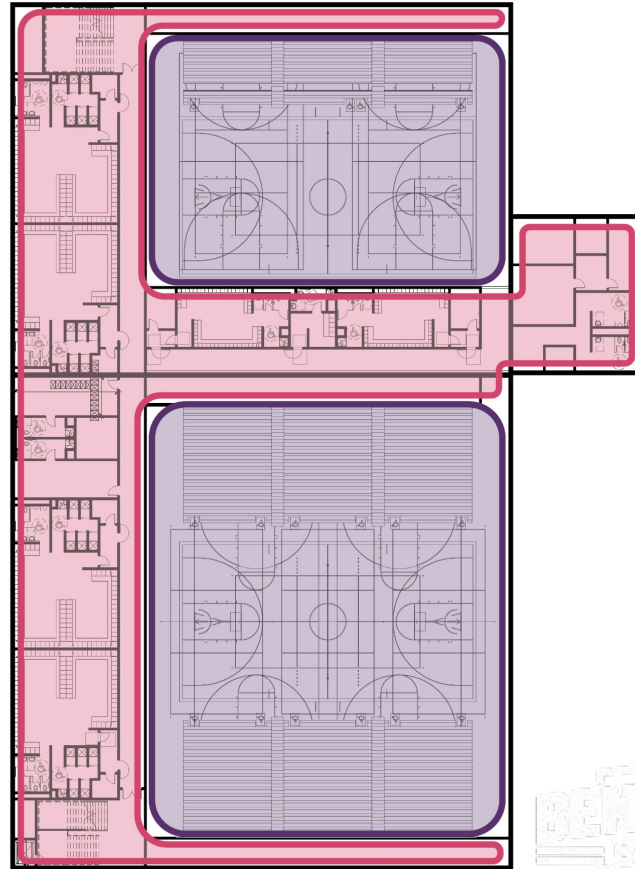
- **800 Seat Auditorium**
Stage, dressing rooms & makeup room, scene & stage shop, and storage
- **Band Classroom**
Practice rooms, uniform storage, and instrument storage
- **Choir Classroom**
Practice rooms and robe storage



High School Features

Competitive and Auxiliary Gyms located on the lower level of the school.

Support space including locker rooms, offices and storage space is also located on the lower level.

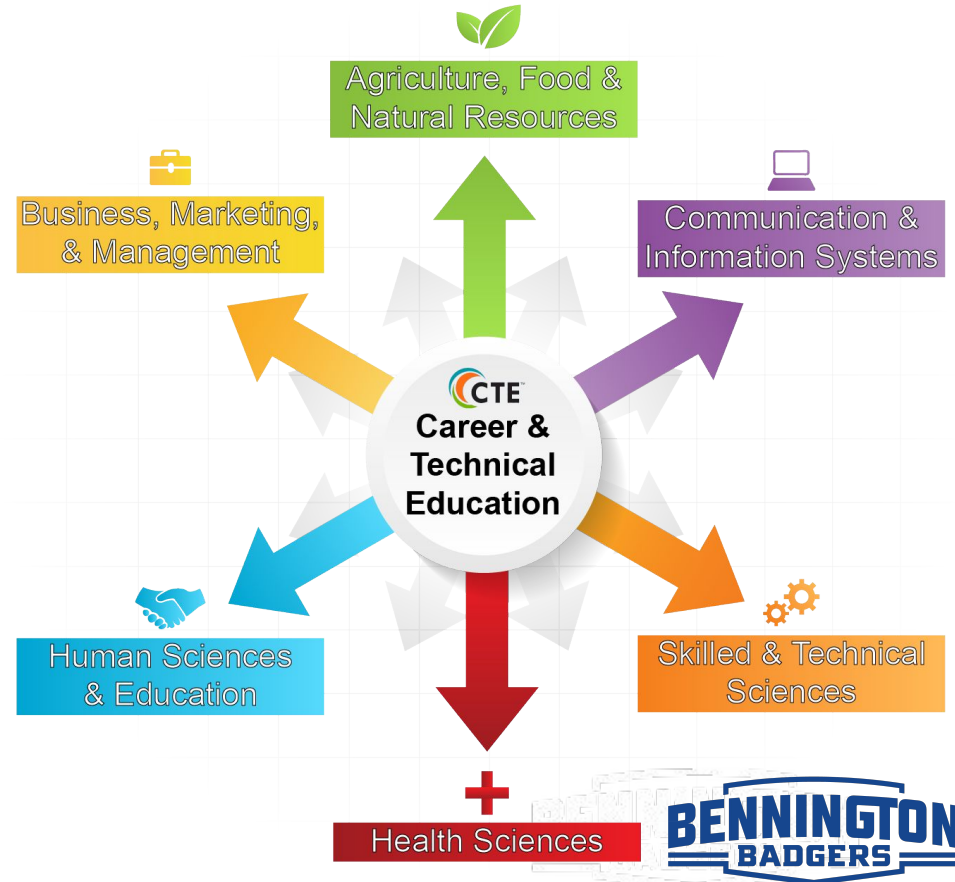


Career & Technical Education

At the High School, there is currently a 3-course series in:

- Business Management
- Finance
- Information Technology
- Architecture & Construction
- Manufacturing

Planning to expand course offerings at the 2nd high school.



Provide High Quality Education

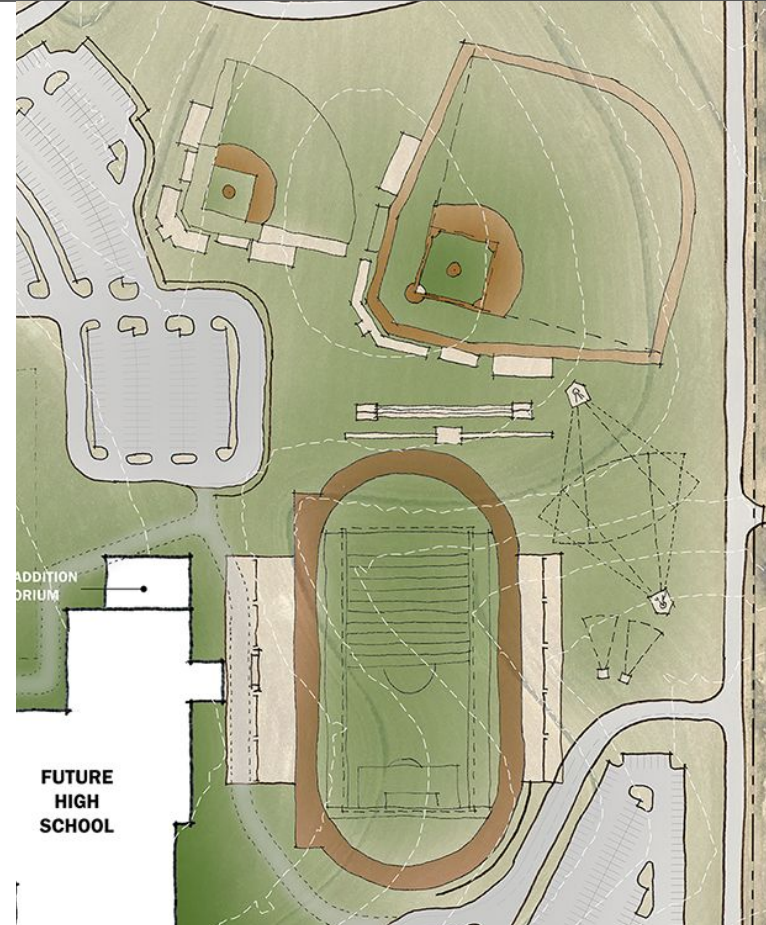
- Composite ACT score is **23.0**
 - Higher than both the state and national average
- **11** Advanced Placement courses offered
- **75%** of students achieved a 3 or higher on AP exams
- **96%** Student Daily Average Attendance Rate
- **96%** graduation rate for 2021 graduates
- **21.3** student to teacher ratio in core classes
- **77%** of staff have an advanced degree beyond a bachelor's
- Rated an **Excellent school district** by the Nebraska Department of Education for the last three years

High School Outdoor Features

- Softball field
- Baseball field
- Lower level competition & practice facility with synthetic turf, a post tension track, and 1,000 seats
- Approximately 1,000 parking spots

Each facility will include:

- Lights
- Stands
- Press box
- Concession stand
- Restrooms



High School Outdoor Features



Six Tennis Courts located at Bennington High School

Both the tennis courts and the stadium may be used by students at both high schools. The 2nd high school will have a field and track, but varsity level contests will be held at the current stadium.



High School Stadium Expansion

Class A stadiums range
from 2,500 - 7,200

Expansion Total Capacity - 4,161
Home Capacity - 2,777
Visitor Capacity - 1,384

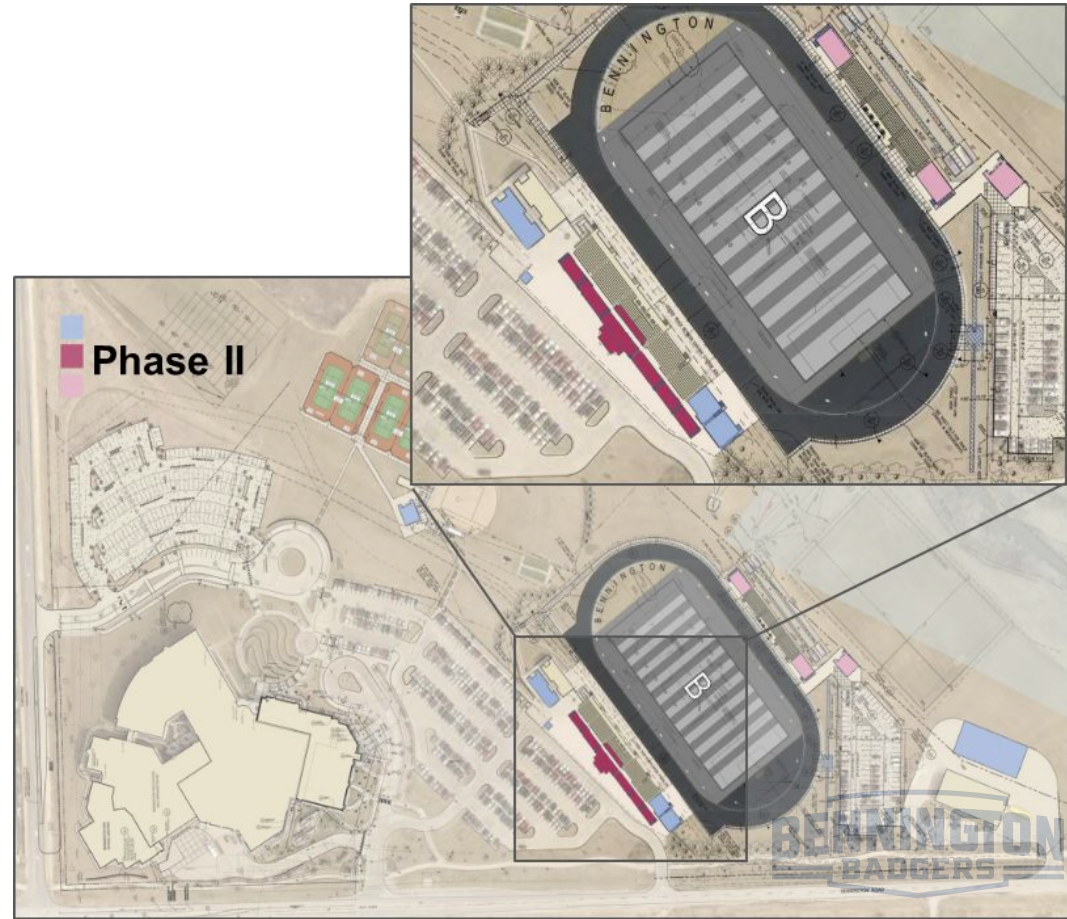


High School Stadium Expansion: Phase II

Stadium Expansion Phase II

Includes:

- Removal of current press box
- Addition of upper level seating
- Expansion of stadium plaza
- New press box



Activities Enhance the High School Experience

- More than **65%** of high school students participate in activities or athletics.
- **18** Sports Teams offered with a variety of skill-level competition opportunities
- **500** students for the 21-22 school year were involved in activities including Band, Choir, Drama, Speech, FBLA, Skills USA, Dance & Cheer
- Clubs are offered for students to explore interests including Robotics, Student Senate, French, Multicultural, and many more.

A student involved in activities, excels academically



District Safety & Security Upgrade

Add a protective film on all windows and doors throughout each building in the District.

This protective film will add another layer of protection if an intruder tries to gain access to the school and break through a window or door.



Financial Facts

2nd High School (1,000 student capacity)	\$135,869,025
Career & Technical Classrooms	\$ 3,605,827
Stadium (1,000 Seats)	\$ 2,585,453
Track (Post-Tension Substructure)	\$ 2,175,580
Softball/Baseball Fields	\$ 5,003,601
Synthetic Turf on Stadium Field	\$ 896,274
High School Tennis Courts	\$ 1,946,708
District Security Upgrades	\$ 350,000
High School Stadium Expansion Phase II	\$ 1,270,444
Total Estimated Costs	\$153,702,912

Total Cost of the Bond Issue: \$153,000,000

**Total cost of all projects is \$153,702,912. Bennington Public Schools will be using \$702,912 of the District budget for items in the 2nd high school like technology.*



Tax Impact

\$153 Million Bond Issue

- A \$0.10 increase
- \$300 annual increase on a \$300,000 home = \$25.00 per month



What if the Bond Issue does not pass?

- Overcrowding at the high school will create a larger student to teacher ratio and the possibility of decreased opportunities for students.
- Delaying construction may translate into higher bond interest rates and construction costs.
- The District will make short-term accommodations using money from the general fund.
- The District would be required to spend additional funds in order to call another bond election.

Timeline

- **October 3rd:** Absentee Ballots Begin to be Mailed Out
- **October 4th:** Bond Informational Meeting @ BHS 5:00 PM
- **October 5th:** Bond Informational Meeting @ BSMS 6:30 PM
- **October 6th:** Bond Informational Meeting @ DO 7:00 AM
Bond Informational Meeting @ PC 6:30 PM
- **October 11th:** Early Voting at Election Commission Office Begins
- **October 21st:** Deadline to Register to Vote
- **October 28th:** Deadline to Request Absentee Ballots
- **November 8th:** Election Day





Questions?

